

# Air Mac

## C&W Blower System

Increased productivity and reduced costs are just a few advantages of using the Air Mac blower package. They eliminate the need for blowers on individual tanker trucks, reducing wear on your trucks, decreasing fuel usage, and lowering maintenance costs. Plus, they speed up your operations with a quick truck turnaround.

### Standard Equipment for Blower System

#### BLOWER

Positive displacement rotary lobe design with synthetic lubricant

#### MOTOR

TEFC, 220/440/3/60, Class F insulation, E Pak efficiency 1.15 S.F.

#### DIRECT DRIVE

Non-lubricated EPDM rubber element, 1.5 S.F. with enclosed guard

#### RELIEF VALVE

Sized for full capacity, spring style design

#### DISCHARGE CHECK VALVE

Eliminates back-flow of material in the blower

#### AIR PRESSURE GAUGE

Features a stainless steel case with liquid-filled dial face

#### INLET FILTER

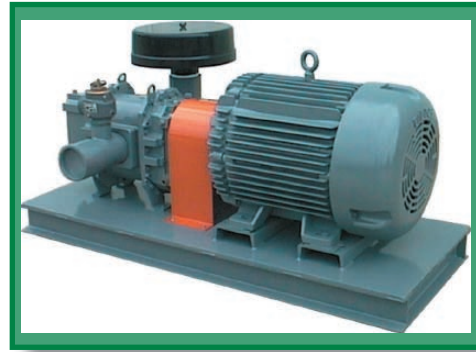
Heavy-duty, oversized with replaceable dry element

#### LUBRICANT LEVEL GAUGE

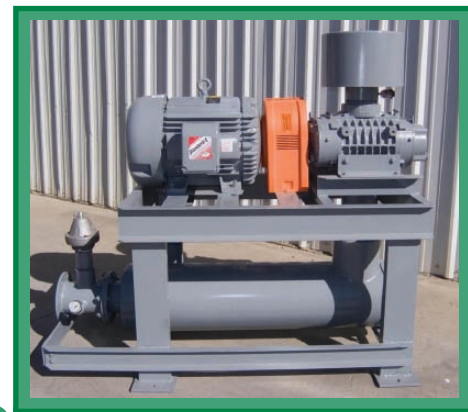
Allows quick view of blower lubricant level

#### STEEL BASE

Rugged construction provides superior mounting platform with lifting lugs.



AirMac Blower System  
(without silencers)



AirMac Blower System  
(shown with silencers)

### Specifications

#### Specs for the Blower System "AMDD"

Model: AMDD	20	30	40	50	60	75
Package Performance						
Rated Pressure	12 PSI	12 PSI	15 PSI	15 PSI	15 PSI	15 PSI
Air Flow CFM	310	470	460	460	690	920
Capacity Est. Ton per Hr.	14-20	14-22	18-25	18-25	24-50	45-57
Drive Motor						
Nameplate	20HP	30HP	40HP	50HP	60HP	75HP
Motor RPM	3500 RPM	3525 RPM	3500 RPM	3500 RPM	3500 RPM	3500 RPM
Voltage	220-440/3/60	220-440/3/60	220-440/3/60	220-440/3/60	220-440/3/60	220-440/3/60
Enclosure	TEFC	TEFC	TEFC	TEFC	TEFC	TEFC
Service Factor	1.15% SF	1.15% SF	1.15% SF	1.15%	1.15% SF	1.15% SF
Blower						
Blower Size	404	406	406	406	409	412

### Optional Items:



**Silencer Package:** Includes inlet and discharge silencers, with straight-through design and acoustic absorption for maximum noise reduction. The addition of the silencer package reduces the typical attenuation curve by approximately 20-30 decibels.

Includes silicone rubber flex couplers between blower and silencers to reduce the typical vibration and thermal expansion, eliminating stress to the blower.

\* Total enclosure silencer packages available upon request.

Air Mac

Central Collectors

Silo Collectors

Mobile Collectors

Slump Master II

# AirMac Automatic Transfer System

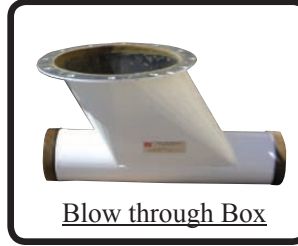
## (Upgrade from C&W's Blower System)



Standard Equipment  
for Transfer System



Rotary Vane Feeder



Blow through Box



Emergency Slide Gate

### AMDD BLOWER PACKAGE

Includes all the standard equipment of the AirMac blower package, including motor/blower, direct drive, inlet filter, check and relief valves, pressure gauge, and the steel base.

### ROTARY VANE FEEDER

Rotary vane feeder features a hardened, chrome-plated, gray cast iron inner body, gray cast iron end plates, and a cast iron rotor with tips. (Size based on desired material transfer rate) Air Purge System included for longer bearing life.

### ADJUSTABLE SLIDE GATE

Slide gate features a wheel handle with ball bearings for adjustment. Constructed of steel c-channel.

### BLOW-THROUGH BOX

Allows efficient transfer of material from the rotary vane feeder into the transfer line. Includes all necessary mounting hardware.

### ELECTRICAL CONTROL PANEL

Available for 220V or 440V, our control panel is housed in a NEMA 3R weatherproof cabinet. It features a main fused quick disconnect, transformer, sequential timers, and manual push button controls. In addition, it has a motor starter, fuses, and overload heaters.

### BIN ADAPTER

The AirMac system includes a bin adapter to mount on an existing or new storage silo. Every adapter is custom-designed to customer specifications.

### BIN INDICATORS

Two solid-state probe-type bin indicators for high and low level material measurement. Features NEMA 4 enclosure, potted electronics, time delay settings, and 3' long steel rod.

### TRANSFER LINE

14' of heavy-duty pneumatic transfer hose with fittings provided between blower and blow-through box.

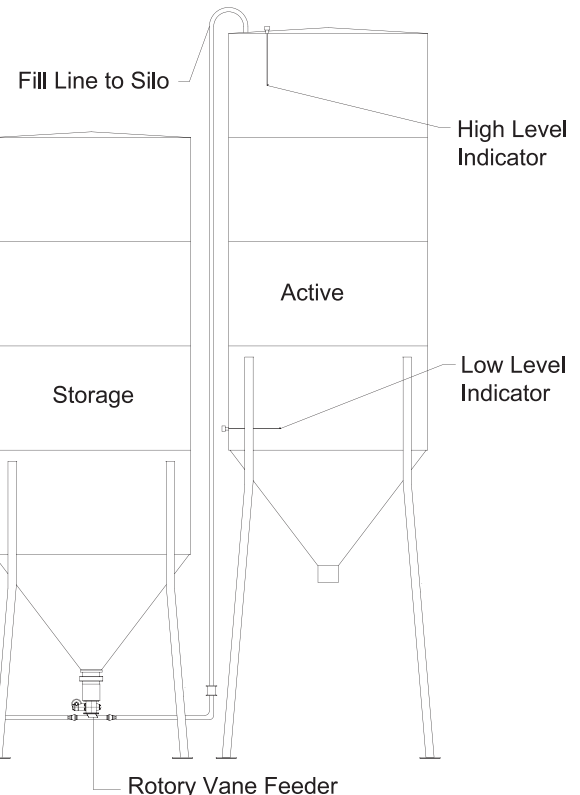
### OPERATION

System is designed to automatically transfer material from day silo to an active silo via signals received from the high and low level bin indicators.

## Specifications

### Specs for the Transfer System "AMT"

Model:	Horse Pwr	Transfer per hr	Vane Feeder
AMT-20-8	20	5-10	8"
AMT-20-10	20	10-12	10"
AMT-30-10	30	12-18	10"
AMT-40-12	40	19-24	12"
AMT-50-12	50	19-25	12"
AMT 60-12	60	25-30	12"
AMT-60-14	60	31-39	14"
AMT 75-14	75	40-49	14"
AMT-75-16	75	50-55	16"



C&W Manufacturing and Sales Co.  
P.O. Box 908 ♦ Crowley, TX 76036  
1-800-880-DUST ♦ www.cwmfg.com