

# Silo Saver Systems

Warning and Protection Systems  
For Silos and Dust Collectors



**2 PRESSURE SENSOR**



**3 BROKEN FILTER MEDIA**



**1 ANTI-OVERFILL SYSTEM**

**3 Component System to Protect Silos and Dust Collectors  
against Overfilling, Over Pressuring, and Broken Filter Media**

C&W Manufacturing and Sales Co.  
1-800-880-DUST  
www.cwmfg.com



Silo Saver  
Systems

Central  
Collectors

Silo  
Collectors

Concrete  
Reclaimer

Slump  
Master II

# Silo Saver Systems

Warning and Protection Systems  
For Silos and Dust Collectors

## General Information

C & W's Anti-Overfill System, combined with our Pressure Sensor and Broken Media Filter Sensor, give the highest level of protection available to your silos and dust collectors. Using advanced automated technologies can not only eliminate the human errors that occasionally occur, but can save time and money. The key component to having a protection system is the use of pinch valves that are activated to close when a problem is detected. This shuts off the flow of materials to avoid damage and accidents from occurring, while not interfering with the flow of normal operations.

Protection Systems*	Features
Anti-Overfill	Control Panel, Audible/Visible Alarm, Timer, Pinch Valve
Over Pressure	Pressure Switch, Control Panel, Audible/Visible Alarm, Timer, Pinch Valve
Broken Filter Media	Microwave Sensor, Control Panel, Audible/Visible Alarm, Timer, Pinch Valve

\*also available without pinch valves (warning systems)

## Components

Combine these three Components to fit your needs.  
C&W offers 28 different combination packages to choose from!



Anti-Overfill

- Existing bin indicator monitors material level and signals when silo is full
- Overfill light and horn are activated and pinch valve shuts line down after a preset time, avoiding serious damage or injury.



Pressure Sensor

- Pressure above 1.5 psi can damage your silo and dust collector.
- Pressure Sensor detects high pressure and shuts the material flow down.
- Pressure Switch can also send a signal to turn collector on/off



Broken Media Filter

- Broken filters create maintenance disasters and can cause citations to be issued.
- Broken filter sensor uses microwave technology to detect damages and possible dangerous situations.

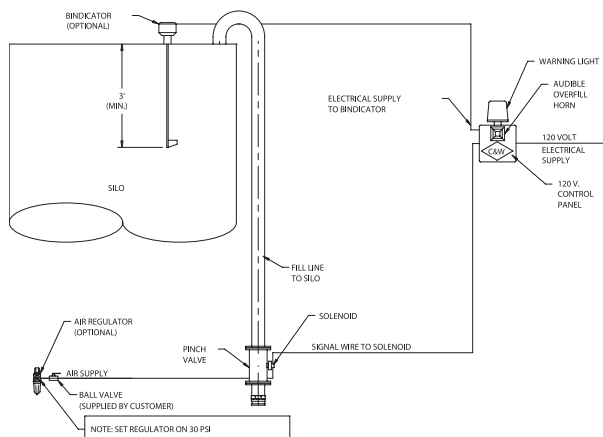


4" Valve in open Position



4" Valve in Closed Position

## Installation



C&W Manufacturing and Sales Co.  
P.O. Box 908 ♦ Crowley, TX 76036  
1-800-880-DUST ♦ [www.cwmfg.com](http://www.cwmfg.com)